

SENTINEL™

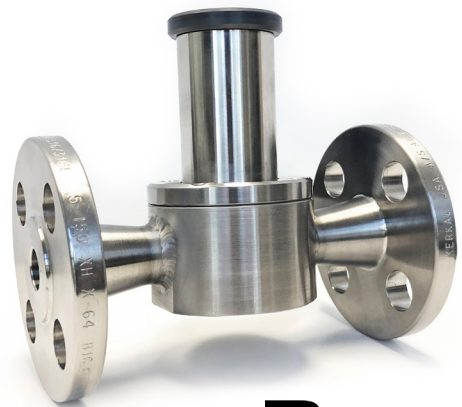
BACK PRESSURE VALVES PRESSURE RELIEF VALVES



Redesigned from the inside out.

Keep the Flow Going with No Chatter!

The new Blacoh back pressure valve features patent pending flow stabilization technology to improve the consistency of flow and pressure downstream of the valve and eliminate dreaded valve chatter.



BLACOH™
INDUSTRIES

The BLACOH Advantage

Plastic Valves

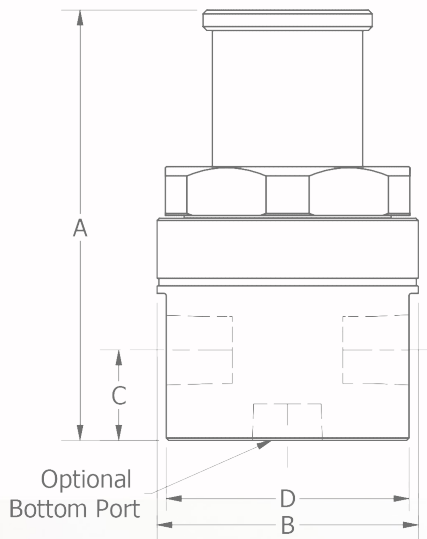
Union style construction is a superior seal and distributes loading evenly over the entire surface. Fewer components, no metal fasteners to corrode, and a better seal during thermal cycling.

Metal Valves

A separate ring attached to the body with bolts distributes the clamping load over the surface providing a more uniform clamping load and improved seal performance.

Spring Seat

A swiveling spring seat ensures the force from the spring can be applied consistently over the diaphragm.



Valve Dimensions		2 Port 180°		3 Port, 2 Port 90°		
Size (NPT)	B Dia	D Flat	A	C	A	C
Mini 1/4 to 1/2"	2.47"	2.30"	4.26"	0.85"	4.49"	1.09"
1/2 to 1"	3.47"	3.22"	5.47"	1.00"	5.72"	1.20"
1 1/2"	4.47"	3.92"	8.07"	1.38"		
2"	5.49"	4.88"	9.76"	1.75"		

MADE IN THE **USA**

Back Pressure Valves				Pressure Relief Valves		
Flow at 150 PSI pressure drop across valve:						
Size	Part #	Pulsating US GPH	Continuous US GPM	Part #	Pulsating US GPH	Continuous US GPM
1/4"	BP-025-_-T	240	12	PR-025-_-*	560	28
3/8"	BP-038-_-T	260	13	PR-038-_-*	620	31
1/2"	BP-049-_-T	288	14	PR-049-_-*	660	33
1/2"	BP-050-_-T	600	30	PR-050-_-*	1240	62
3/4"	BP-075-_-T	640	32	PR-075-_-*	1260	63
1"	BP-100-_-T	710	36	PR-100-_-*	1300	65
1 1/2"	BP-150-_-T	1500	75	PR-150-_-*	3000	150
2"	BP-200-_-T	2000	100	PR-200-_-*	4300	215

_ Body Material	PVC (PVC), Polypropylene (PP), CPVC (CPVC), PVDF (PVDF), 316L Stainless Steel (SS), additional materials may be available on request
* Diaphragm	PTFE (T) EPDM (E), Viton (V) option on Pressure Relief Valves
Inlet Type	NPT, Socket Weld (SW), BSP (BSP), Flange (F), Union (U) 150# flange, 300# flange standard on 50-250 psi high pressure valves
Configuration	Back Pressure Valves 2 Port 180° (BP), 2 Port 90° (BP90) Pressure Relief Valves 3 Port, 2 Port 180° (PR2P), 2 Port 90° (PR90)
Spring Pressure	5-150 psi 5-50 psi (L), 5-250 psi valves up to 1" (M), 50-350 psi metal valves (H)
Valve Top	PVC, 316L Stainless Steel standard on 50-350 psi high pressure valves CPVC (CPVC), 316L Stainless Steel (SS) available on request
Max Temperature	Plastic 140°F, Metal 300°F

